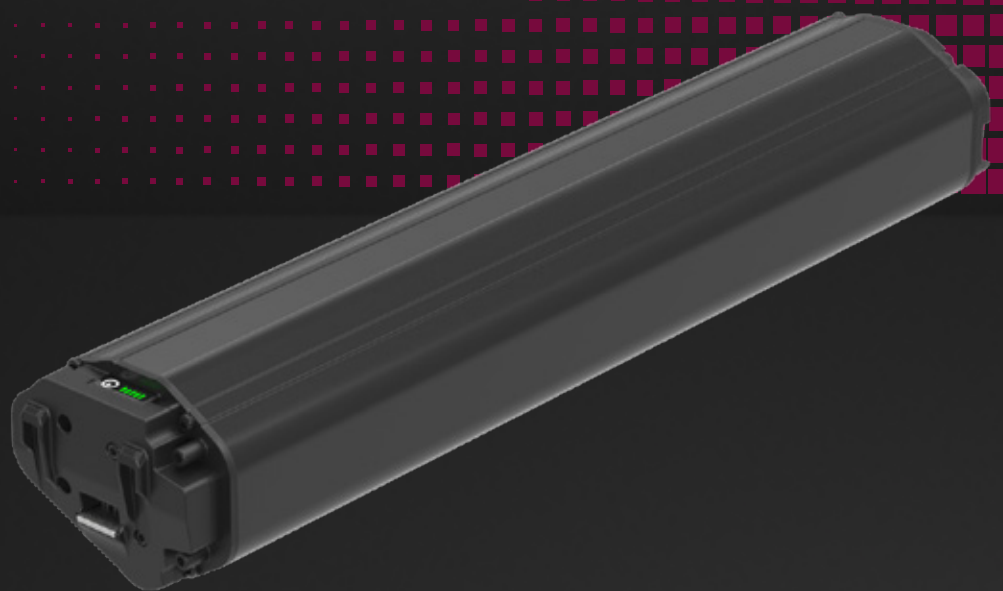


# POWER2RIDE RB-900

New BMZ, global battery platform, designed for eMTB, eSUV, eTrekking/City/Commuter and eCargo.



E-Mobility



Drive  
System



Energy Storage  
Systems



Power and  
Garden Tools



Industrial



Medical

# POWER2RIDE.

## RB-900

### Advantages

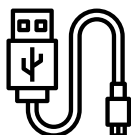
- **New BMZ, global battery platform** – off-shelf product as well as a basis for OEM or ODM, designed for eMTB, eSUV, eTrekking/City/Commuter and eCargo.
- **Light (3,8 kg) and full of energy (up to 860Wh)** – no more need of choice between light bike and short range vs. heavy bike and unlimited range.
- **Best on market power density (226Wh in 1 kg).**
- **Latest battery cells compatibility.**
- **Sophisticated design – no more bad looking e-bikes:**
  - Unique, slim, oval in cross-section = best looking bikes/slim frame down tube.
  - Not only for super high riders, short battery = suitable for S-size frames.
- **EU producer and European product** (from parts, suppliers, through production site, till standards and regulations compliance)
- **Uncompromising safety** – no matter where are you riding and storing your e-bike.
- **Highest resistance level to harsh weather conditions, water and dust (IP67).**
- **New, user friendly assembly set** - easy to integrate with bike frame (all types of materials, incl. carbon), many insert options: down/top/in-tube slide.



Adaptation to new European regulatory (2023/1542), incl. single cell replacement (currently one of the few batteries that can be offered on the market after February 2027 - it is a guarantee of safe use of the battery but also a guarantee of business security for the bicycle manufacturers)



Up to date certification  
(much more than just  
EN50604-1 compliance)



USB-C charging feature.



Automotive level parts  
and components



Service/after-sales  
BMZ global network in  
Europe, North/South  
America and Asia.

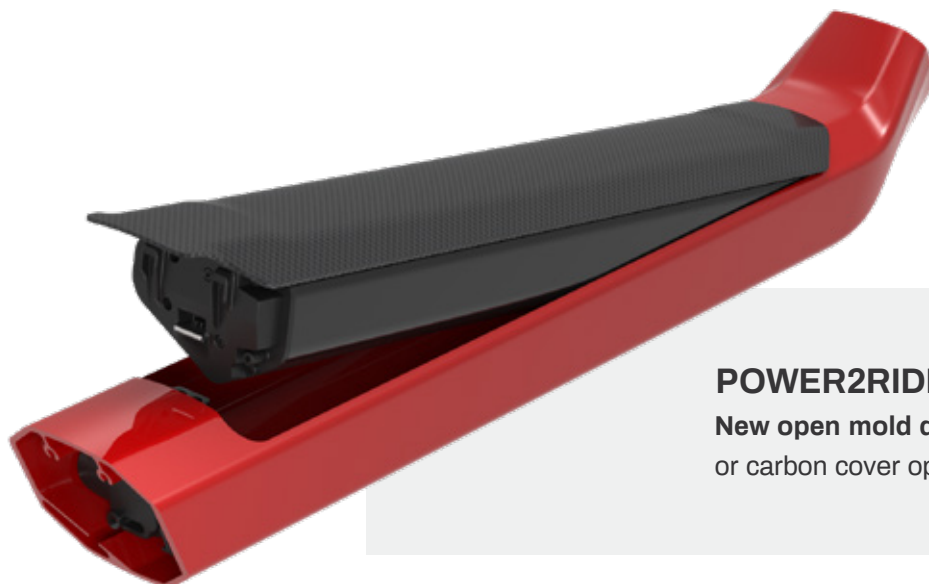
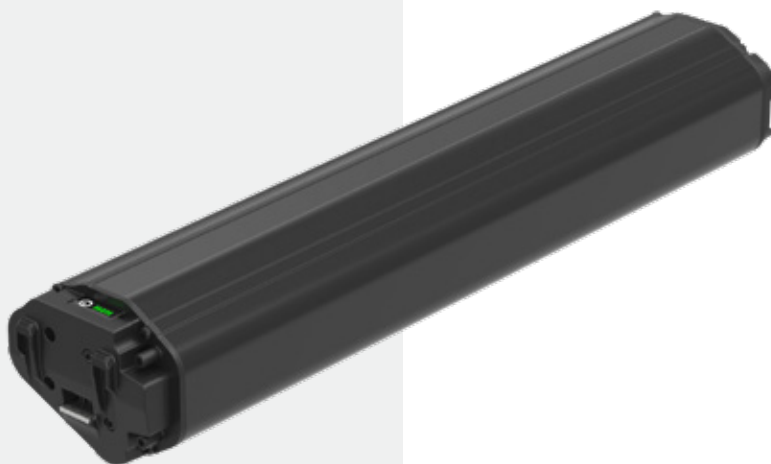
# TECHNICAL SPECIFICATIONS

Parameters	30-40 pcs Li-Ion Cells 21700
Main capacity / config. options	36V (10S4P): up to 24Ah (860Wh) 36V (10S3P): up to 18 Ah (650 Wh) 48V (13S3P): up to 18Ah (840Wh)
Discharging / charging socket	Fast charging plug (new standard, new supplier possibility) USB-C (extension option)
Current rates	Discharge 25A charge up to 10A
Assembly type	InTube, with DT insert: top/down/in-tube slide
Weight	3.8 kg

## POWER2RIDE.

### Multi compatibility with e-drive systems

(among others, premium battery for e-drive systems such as Shimano, Panasonic, Motinova, Intradrive, Oli eBike Systems, Bafang, BMZ RS and GT, Sachs RS) – BMS is ready to communicate with all leading e-drive systems on the market.



## POWER2RIDE.

**New open mold downtube** – slim design with alu or carbon cover option.

# Any questions?

Contact us, we will be pleased to advise you.

## Headquarters

**BMZ Germany GmbH**

Zeche Gustav 1  
63791 Karlstein am Main  
Germany

T: +49 6188 9956-0

E: [mail@bmz-group.com](mailto:mail@bmz-group.com)

### **BMZ USA Inc.**

1429 Miller Store Road  
Virginia Beach  
VA 23455  
USA

T: +1 757 821-8494

E: [contact-usa@bmz-group.com](mailto:contact-usa@bmz-group.com)

### **BMZ Company Ltd.**

Julong Technology Building B  
Cuibao Road, Longgang District,  
Shenzhen, Guangdong Province  
P.R.China 518116

T: +86 755 8977 5800

E: [contact.cn@bmz-group.com](mailto:contact.cn@bmz-group.com)

### **BMZ Poland Sp. z o.o.**

Alberta Einsteina 9  
44-109 Gliwice  
Poland

T: +48 327842 450

E: [power2ride@bmz-group.com](mailto:power2ride@bmz-group.com)

### **BMZ Innovation Group Ltd**

Future Business Centre  
Kings Hedges Road  
Cambridge, CB4 2HY  
United Kingdom

T: +44 7767 038663

E: [power.uk@bmz-group.com](mailto:power.uk@bmz-group.com)

### **BMZ Japan KK**

Shitaya 1-6-5, Taito-ku,  
Tokyo, 110-0004  
Japan

T: +81 35811 1973

E: [tokio.kobayashi@bmz-group.com](mailto:tokio.kobayashi@bmz-group.com)

### **BMZ France S.A.R.L.**

16 Rue Auber  
75009 Paris  
France

T: +33 06 84 52 76 29

E: [contact\\_bmzfrance@bmz-group.com](mailto:contact_bmzfrance@bmz-group.com)

**[www.bmz-group.com](http://www.bmz-group.com)**

© BMZ 2025

All rights reserved. Preliminary data sheet. Although great care has been taken in the preparation of this data sheet, BMZ accepts no responsibility for any errors or omissions. All information contained herein is subject to change without notice.

Stand: 06.2025

